



## ABERDEEN

+44 (0) 1224 212778

## LEITH

+44 (0) 1314 543380

## GREENOCK

+44 (0) 1475 725372

## TROON

+44 (0) 1475 725372

## GRANGEMOUTH

+44 (0) 131 454 3380

[info@dalesmarine.co.uk](mailto:info@dalesmarine.co.uk)

[www.dalesmarine.co.uk](http://www.dalesmarine.co.uk)

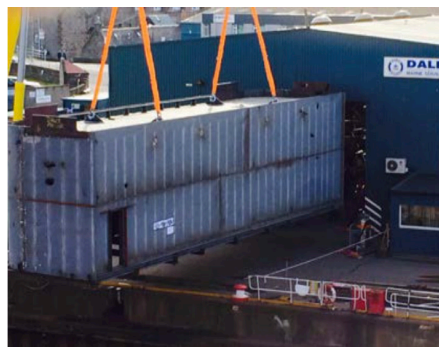
# CASE STUDY

## Conversion

### Grampian Sceptre & Grampian Sovereign

Dales Marine Services Ltd during an eight week project fabricated two carbon steel stability tanks weighing 53te each. The large structures measuring 18m x 3m x 5m was fabricated and each installed on-board North Sea platform supply vessels Grampian Sceptre & Grampian Sovereign owned and operated by North Star Shipping in late August 2014.

Covering 24hrs a day and by the end on week two the fabrication of the two tanks in our Aberdeen workshop began to take shape, a team of 15men worked days and 15men nights from procurement of materials, project management through to painting the final assembly it was all carried out in house from our Aberdeen office.



Upon completion of the fabrication, the NDT was carried out following the attending IACS requests. A lift and movement plan was collaborated and implemented to lift the tank eight inches off the ground level to position eight-wheeled skates capable of supporting 50te. The supporting brackets and skates were aligned carefully and the workshop and yard areas cordoned off for health and safety requirements.

A contract lift was organised by DMS and skilfully executed by Whytes Crane Hire. The 350te crane was brought in and set-up adjacent to the fabrication workshop. The structure was gradually moved outwards from the workshop until it became within the cranes reach. The rigging was connected. The tank was lifted free of the rollers and positioned at the other side of your yard, ready for installation.

Work continued on the vessel fitting the new tank and carrying out new installations of stairways and crashrails, the old existing below deck stability tank was converted into new deck stores and chemical stores complete with firefighting equipment.

New pipeworks were installed to accommodate the upper level deck tank, ballast water pumps and pneumatic valves were also fitted in the pipelines.

System tests were carried out on all the new ballast and hydraulic piping.



Upon completion of the steelwork modifications all affected areas and new steelworks were painted according to Jotun specification, new fresh water tank coatings were applied and then approved specialists carried out the re-chlorination of the vessels system. From material procurements through to final completion of the two vessels our specialist team of skilled men completed this project in 60 days.